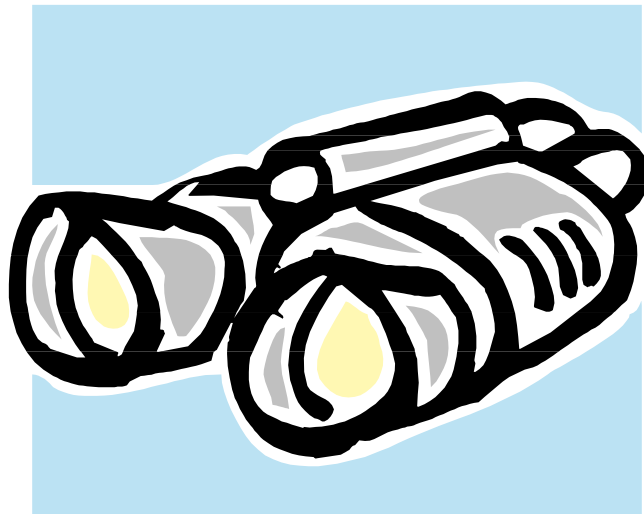




(Contains updated information for 2003/2004, plus new locations)



This section contains a partial list of the places for den or pack outings.

Places we did not specifically include are:

Police departments and fire departments: Most of them have wonderful programs for children. Don't forget 9-1-1 centers in your community. Contact your police department.

Other public facilities: Some cities give tours of their city halls. Some judges are willing to talk to the boys in their chambers. These are great for the Webelos Scouts. Libraries are always fun to visit, especially when they let you see the storage rooms or basement.

Supermarkets and restaurants: Albertsons, Safeway, Costco and many other supermarkets give tours. Children like their big freezers. Carl's Jr., Burger King and McDonalds are but a few of the fast food restaurants who take the kids behind the counters. Chevy's and other restaurants give tours too.

Many other places do not publicize it but give tours to those who request them. Others, mostly private businesses, may not have given any tours before but probably would be willing to do so if asked. So if you are working on caring for pets with your Wolves, call a pet shop or your veterinarian. If you need a bicycle expert for the Webelos Handyman badge, just call a bicycle shop in your neighborhood and ask. Ask for specific things; tell them what you need to have covered for a particular achievement or activity badge. Many are more than willing to accommodate you.

City, County, State, and National Parks: We did not include as many outdoor facilities for picnics, hiking and camping as we would have liked. We are lucky to have so many beautiful parks surrounding us. Call County Parks, State Parks and National Parks for information. These services have their own guidelines and publications. California State Department of Parks and Recreation publishes yearly, a listing of their special events, programs and activities; from an astronomy program and kite festival to a poison oak festival and banana slug derby.

Call (916) 653-4000 and ask them to send you the 2004 Event Calendar.

State Park Camping Reservations: (800) 444-PARK. Information is also available through the Department's Internet website: www.cal-parks.ca.gov

Santa Clara County Parks: Reservations: (408) 358-3751. Some of the county parks have youth campgrounds. At \$30 per site for the first night and \$10 for each additional night, these are great bargains. And the sites are well maintained. Call the Parks and Recreation department for more information at (408) 358-3741.

Mid-peninsula Regional Open Space District preserves: call (650) 691-1200 for information. They have great educational programs.

AAA has books and maps for the area including those for camping. Ask them for a copy. Boy Scout leaders are excellent resources for hiking trails and camping grounds.

If you are taking your den or pack on an outing, call ahead, even if a reservation is not required. Most of the phone numbers and fees in the following pages have been updated as of December 2003. But they may change. Also the hours often change between

summer and winter so it is advisable to call for the latest information before you go. We recommend that you take coins and dollar bills for parking since more and more parking lots are being automated.

SAN JOSE AND VICINITY

ALUM ROCK PARK

Penitencia Creek Rd., east of US 101. The Alum Rock Ave. entrance is closed to cars but not foot traffic so you can still walk in through it. Open 8 am-1/2 hour after local sunset. Park free, parking \$4 per vehicle year round. Visitor center (408) 259-5477. Open 7 days a week in the summer time and weekends in the winter. Overnight camping available for youth groups, call for costs. Park subject to closure in the summertime due to fire danger so call ahead for park condition.

Picnic facilities and marked trails. Camping available for youth groups.

See YOUTH SCIENCE INSTITUTE-ALUM ROCK DISCOVERY CENTER

BFI

Please see the RECYCLERY

BLOSSOM HILL CRAFTS

15900 Blossom Hill Rd., Los Gatos. (408) 356-9035. Field trips are usually scheduled after school time (3:30-5:30 range). Min. age is 8. Min. group size is 10, Max. group size is 24. Field trip can last anywhere from 1 1/2 - 2 hours. Cost per participant is \$10.00. This includes a tour of the studio, demonstration of wheel pottery, and a hands-on clay project made and decorated by the Scouts. Cost includes clay, decorating tools, and firing. Call to arrange times and for more information. Ask for Joanne Brice.

www.blossomhillcrafts.com

Make real pottery and see how it is done in a real working studio. This fantastic studio offers a special tour and a hands-on “ceramic” experience to Scout groups.

CALIFORNIA HISTORY CENTER

De Anza College, 21250 Stevens Creek Blvd, Cupertino 95014. (408) 864-8712. Mon-Thurs, 8:30-noon and 1:00-4:30, Fri. by appt., closed July & Aug. Free. 4th grade and up. Group tours by appt.

www.calhistory.org

This living history museum is housed in the restored Le Petit Trianon, the original house on De Anza land. It doesn't take long to see this place. They recommend visitors to combine this tour with the visit to the planetarium and/or the environmental study area.

CAMPBELL HISTORICAL MUSEUM AND AINSLEY HOUSE

51 North Central, Campbell 95008. Off First St. and Civic Center Drive. (408) 866-2119. Thurs-Sun, 12:00-4:00. Adults, \$4; Seniors, \$3; youth 7-17, \$2.50; under age 7, free. Closed holidays. Ainsley's house located at 300 Grant St. Ainsley House fees: adults, \$6; seniors, \$4; youth 7-17, \$2.50; under seven, free.

www.ci.campbell.ca.us/communityandarts/museum.htm

The Campbell Historical Museum features “Please Touch” displays, where you can get a feel and glimpse of Santa Clara Valley history. School groups by reservation only are welcome Mon.-Wed. for the Hands-on-History program.

Docent-led tour of the Ainsley’s house, which depicts the lifestyle of the 1920’s and 1930’s. Learn about Campbell history. The tour lasts about 45 minutes.

CHESEBROUGH SCOUT RESERVATION

Council’s camp located on Hwy. 9. A great place for overnight for Webelos or pack families. And with a service project, it’s free! Inquire at the Council Service Center.

CHILDREN’S DISCOVERY MUSEUM

180 Woz Way, San Jose 95110. (408) 298-5437. Tues-Sat, 10:00-5:00; Sun, 12:00-5:00; closed Mondays except designated holidays. Adults, \$7; ages 1-17, \$7; seniors 60 and over, \$6; under one year, free. Group rates available for schools and non-profit groups. Parking (Woz Way Lot) \$3-7 per vehicle, exact change. Theater specials, story telling, and programs. Groups by appt. The museum also does an overnight sleep-in for Cub Scout groups. There is a fee. Call Karen Peck at ex. 246 at the number above and she will arrange it for you and give you all the necessary information. Just bring your sleeping bag, a flashlight, and your curiosity. Use the BSA scout-adult ratios. Do it as a pack.

www.cdm.org

Spectacular hands-on exhibits and games capture the imagination of children instantly. Cameras, still and video, are welcome. The museum can be reached by the light-rail. Get off at the Children’s Discovery Museum stop.

DE ANZA COLLEGE

21250 Stevens Creek Blvd.

They have California History Center, Environmental Studies Area and Minolta Planetarium. Please see separate listings.

ENVIRONMENTAL STUDIES AREA

De Anza College, 21250 Stevens Creek Blvd, Cupertino 95014. (408) 864-8346 (leave message, they are not in the building often). Free. Open to any age, maximum 30 people. Tours first Sunday of every month from 10-2 or by arrangement.

<http://environmentalstudies.deanza.edu/esa>

They have 1 1/2 acres of native California plants, divided into areas like desert, coast, etc. Children can see adaptation of plants, California ecology in a nutshell, food chain and seed dispersions. Tour lasts one hour or longer. Combine this tour with a visit to the planetarium or California History Center.

HAKONE JAPANESE GARDENS

21000 Big Basin Way, Saratoga 95070. (1/4 mile outside of Saratoga Village, on Hwy. 9 going towards Chesebrough, it’s on the left) (408) 741-4994. Mon-Fri, 10:00-5:00; weekends, 11:00-5:00. Closed Christmas and New Years. Free admission, Parking \$7

FIELD TRIPS

per vehicle. Children under 10 must bring an adult. Guided tours given April-Sept. on weekends from 1-4pm. Special group tours available by appointment.

www.hakone.com

There is a picnic area. Gift shop open Mon-Fri, 10-5; Sat-Sun, 11-5. Tea Ceremonies on the first Thurs. of each month at 1pm, 2pm, and 3pm by reservation. \$3 per person. Max. group size for tea ceremonies, 20 people or can split group up. If that Thurs. is not good for you then they will do a special one for you by reservation at Tauchi's own house not at Hakone Gardens. call (408) 867-9133 for reservations.

HAPPY HALLOW PARK AND ZOO

1300 Senter Road, Kelley Park, San Jose 95112. (408) 277-3000. Daily, 10:00-5:00. Ages 2-64 \$4.50; 65-74 or disabled, \$4; under 2 or over 75, free for the park, zoo, and all rides. Parking \$4 for the park, weekends and holidays to enter Kelly Park. Subject to closure in bad weather. Open 8-½ hour after local sunset. Closed Christmas. For reservations call 295-8383. The Kelley Park Express Train costs \$1.50. Operates weekends and holidays weather permitting. Call for the day to day availability of attractions and hours.

<http://www.happyhollowparkandzoo.org>

The zoo has excellent programs about caring for animals given by zoo attendants. Their Animal Encounters program is 45 minutes long for 30 or less people. Cost is \$65 for group, including admission. Need at least 1 month advance notice (2 months in spring). If interested, call Zoo Education Center at 277-5120. The Zoo Education Center also offers a Happy Hollow Zoo patch program for Scouts to earn. Family and group sleepovers at the Zoo are available for your group to participate in animal encounters, hand-on activities, games, crafts and behind-the-scenes tours – call for reservations.

THE HUMANE SOCIETY OF SANTA CLARA VALLEY (SPCA)

2530 Lafayette, Santa Clara. Only one in Santa Clara County. (408) 727-3383 ex. 812 Education Coordinator. Tours by appt. only. Tours are Mon.-Fri. only. They don't do tours after it gets dark so in the winter not past 4 or 4:30. In the spring and summer it is later because it stays light longer. Max group size, 10 people and must be 7 years or older.

Please bring a give-away gift for the animals (a blanket, dog biscuits, toys, etc.).

INTEL MUSEUM

2200 Mission College Blvd., Santa Clara. (408) 765-0503. Open Mon-Fri, 9-6; Sat, 10-5; Closed Holidays. Admission and parking Free. Free group tours are available through advance reservations. Group tour size: Minimum 8, Maximum 25 adults or 35 students; tour times Mon-Fri. 10-4.

http://www.intel.com/intel/intelis/museum/about/santa_clara

Has hands-on exhibits where you can learn all about computers and the Internet. The museum store carries clothing and souvenirs related to the chip industry.

FIELD TRIPS

JAPANESE FRIENDSHIP TEA GARDEN

15300 Senter Road, Kelly Park, San Jose 95112. (408) 277-5254. Daily, 10:00-sunset. Free. Parking \$4.

The garden is patterned after Korakuen Park in San Jose's sister city of Okayama. Feed Koi fish in the pond (25 cents for the fish food).

KELLY PARK

Senter and Story Rds, San Jose. (408) 277-5562. Open 8-1/2 hour after sunset.

See individual listings for Happy Hallow Zoo, Japanese Friendship Tea Garden, and San Jose Historical Museum.

LICK OBSERVATORY

Mt. Hamilton 95140. Highway 130, 25 miles Southeast of San Jose. (408) 274-5061. Visitors Center, weekdays, 12:30-5:00; weekends, 10:00-5:00. Tours, from 1/2 hour after opening to 4:30, every 30 minutes. Free. Call in advance for bigger groups. Check road conditions in the winter because the roads do get closed due to snow.

www.ucolick.org

Ten-to-15-minute-guided tour of the 36" reflector telescope. Self-guided tour of the rest of the facility. There is a 120" reflector telescope 1/4 mile east of the visitor center. It is an hour drive from San Jose. Since you cannot look through the telescope during the day, combine this trip with a visit to Joseph Grant County Park, about 15 minutes from the observatory.

The observatory is open some nights between June and September. Call and ask for more information.

LOCKHEED MARTIN

1111 Lockheed Martin Way, Sunnyvale. Building 107. (408) 742-5606 ask for Gail (ex. 62338). Space exhibit facility. 4th grade and up. Tours for Mon afternoons and Fri mornings. Lasts about 1 hr. Reserve 1 week in advance, required. Free. Max group size, 30. Min group size 10 (including parents). Call for directions and map. There are about 50 buildings so let Gail give you directions.

TOURS HAVE BEEN STOPPED FOR AN INDETERMINABLE TIME SO CALL FIRST FOR INFORMATION TO SEE IF THEY ARE OFFERING THEM.

Great exhibits on the Hubble Space Telescope and other phenomenal achievements.

LOS GATOS ART AND NATURAL HISTORY MUSEUM

Corner of W. Main and Tait Ave. (in old fire house) P.O. Box 1904, Los Gatos, CA 95031.

(408) 354-2646. Wed-Sun, 12:00-4:00. Free (but they ask for a \$1 donation).

The main floor has art exhibits. Downstairs houses rocks, fossils and natural history of the area. Docent-conducted tours are available. Suitable for the Webelos Geologist Activity Badge.

MINOLTA PLANETARIUM

De Anza College, 21250 Stevens Creek Blvd at Stelling Road, Cupertino 95014. (408) 864-8814. Call for times and prices since they change with each class session. \$2.00 in quarters for parking. Field trips for groups of 25 or more; \$3.50 per person; schedule 2 weeks in advance.

<http://planetarium.deanza.fhda.edu/pltwwww/ghome.html>

The Minolta Planetarium creates remarkable family shows using audiovisual and video projection systems. Laser Light Shows have been discontinued permanently due to low participation.

They offer Family Astronomy evening shows at 7, get there at 6 to get tickets. Adults \$6, children under 12, \$4.

MISSION SANTA CLARA DE ASIS

Santa Clara University, 500 El Camino Real, Santa Clara 95053. (408) 554-4023. Self-guided tour Mon-Fri, 8:00-6:00; Sun, 12:00-3:30. Free. Guided tours (408) 554-4528 (museum).

Founded in 1777, the present mission is a replica of the third building raised on this site. An adobe wall from the original cloister still stands in the garden. Visit De Saisset Museum, Tues-Sun, 11:00-4:00.

PERALTA ADOBE AND FALLON HOUSE

175 W. Saint John, San Jose. (408) 993-8182. 90-minute guided tours available Sat-Sun, 12:15, last one leaves at 3:30. Adults, \$6; ages 6-17, \$4; seniors, \$5; children under 6, free. Gift Shop, Tues-Fri, 11-4; weekends, 12-5. For booking call (408) 918-1040. Located near the historic San Pedro square. Free on-site parking.

These are two of the oldest dwellings left in San Jose. Peralta Adobe was built in 1797. The Victorian Fallon House was built in 1855. Docent-led tours. Because of school groups, weekdays are crowded. It is better to go in the afternoon or weekend. Call ahead if you are taking a large group.

THE RECYCLERY (BFI)

1601 Dixon Landing Road, Milpitas 95035. (408) 262-1401. Self-guided tour Mon-Fri, 8:00-5:00 for individuals and small groups (ten or less). Guided tours by appt. Reservation: two months in advance. Free.

<http://www.bfisanjose.com/recyclery.html>

One of the largest recycling centers in Northern California. Visitors stand in a glass booth and watch glass, cans, and newspaper being sorted on the floor below. The tours last 1 to 1 1/2 hours.

ROSICRUCIAN EGYPTIAN MUSEUM AND PLANETARIUM

Rosicrucian Park, 1342 Naglee Ave (at Park), San Jose (408) 947-3636. Non-school related tour, call 947-3665 Egyptian Museum: Tues-Fri, 10:00-5:00; Sat-Sun, 11:00-6:00; closed Mon. and major holidays. Adult \$9.00; seniors and students, \$7; ages 5-10 \$5.00; under 5, free. The planetarium is closed.

www.egyptianmuseum.org

FIELD TRIPS

Egyptian and Babylonian mummies, sculpture, paintings and scrolls are in abundance. Children would want to know how old each item is.

SAM'S DOWNTOWN FEED AND PET SUPPLY

759 W. San Carlos St., San Jose 95126. (408) 287-9090. Open Mon-Fri, 8-7; Sat, 8-5; closed Sundays. Tours of the store and warehouse available. Free. Contact Sam at the above number to arrange and call at least 3 weeks in advance.

www.samsdowntownfeed.com

Tour of a retail store sales area that sells urban feed (pet supplies) and area and country feed supplies. The warehouse gives you a chance to see the various livestock feeds.

SANBORN-SKYLINE COUNTRY PARK

Please see the SANTA CLARA COUNTY PARKS (map) at the end.

also YOUTH SCIENCE INSTITUTE - SANBORN-DISCOVERY CENTER

SAN FRANCISCO BAY NATIONAL WILDLIFE REFUGE

ENVIRONMENTAL EDUCATION CENTER

Alviso. (408) 262-5513. Everything is free. Trails open Sat and Sun, 10-5; Mon-Fri, sunrise to sunset. Ask for Sharon Lee, she does programs for Bear achievement 5 but she can set up other programs if you just ask. Visitors Center (510) 792-0222.

Weekend interpretive programs, nature study walks, slide and film presentation and other classes are available. Call the center for weekend events. A great place to visit with kids.

SAN JOSE ASTRONOMICAL ASSOCIATION STAR PARTY

At Houge Park. Take Hwy. 85 to Bascom and go north toward San Jose on Bascom to the first light, White Oaks. Or Hwy. 880, take Camden Ave., east approx. 1/2 mile to Bascom Ave., turn right (south) on Bascom until the second light, White Oaks Ave., turn left (east) on White Oaks Ave and a few blocks to Houge Park. Turn left (north) on Twilight Drive to get to the entrance. Usually on the Friday closest to a First Quarter Moon. From 1 hour before sunset until about 11:30, weather permitting. SJAA hotline (408) 559-1221. Free.

www.sjaa.net

SJAA has several options for an excellent Scout event. No advanced notice is required for the monthly Houge Park star party, although a call to say you are bringing a group is appreciated. Specific dates for each month are available on the hotline or web site. For a private event (good for larger groups), docent led parties are available at no charge. Links to other local astronomy groups and events are also available on the SJAA web site.

Most of the telescopes will be set up on the lawn next to the parking lot. Or you may want to bring your own. If you are having a problem with your telescope or just want to learn how to use it, this is a very good place to get your questions answered. They are very helpful and friendly. For more information, call the Association's hotline (number above).

SAN JOSE HISTORICAL MUSEUM

1650 Senter Road, San Jose 95112. South end of Kelly Park at Senter Road. (408) 287-2290. Tues-Sun, 12-5; closed Mon. Tues-Fri admission is free, Sat-Sun, Adults, \$6; seniors (65 and older), \$5; youth (6-17), \$4; children (5 and under), free. Docent-led tours, by appt. Groups are 10 people or more. Reservations, 2 weeks in advance. Group rates-adults, \$6; seniors, \$5; kids (6-17), \$4; children (5 and under), free. May need a deposit for pre-scheduled group tours. To reserve tours, call (408) 918-1040. They generally reduce prices for group tours.

Reconstructed and restored landmarks bring to life the look of late-19th-century San Jose in this 16-acre complex. Visit the trolley barn and see antique trolleys being restored. Trolley rides (inside the grounds)-weekends only, free.

SAN JOSE MERCURY NEWS

750 Ridder Park Drive, San Jose. (408) 920-5000. Tours are available so just call. Free. Make reservation at least 3 weeks in advance. 3rd grade and up. Group size: 30 (1 adult per every 10 children, required).

This may be a good one for spring break or summertime since tours are limited to mornings. This is a very popular tour. Call early to secure the date you want.

SAN JOSE MUSEUM OF ART

110 S. Market, San Jose. (408) 271-6840. Tues-Sun 11:00-5:00; closed Mondays and major holidays. Admission Free. Last Sunday of every month-from 11-3 is Kid's Art Sunday, a free art time for anyone (children under 13 must be accompanied by an adult). For admissions desk call (408) 271-6855.

www.sjmusart.org

They offer public free tours Tues-Sun at 12:30 and 2:30 for 45 minutes, and on Thurs again at 6:30

SAN JOSE POST OFFICE (main office)

1750 Lundy Ave., San Jose. (408) 437-6621. Any weekday. No tours in December. Up to 40 kids. Tours by appt. Must get approval first by writing to:

Kim Fernandez

1750 Lundy Ave.

San Jose, CA 95101-8000. Include desired dates and times, number of people, phone number, address, and that you are a Cub Scout group.

Allow minimum of one hour. Take a letter and walk through the process. A fun and informative tour for children and adult. Siblings are allowed too.

SAN JOSE STATE UNIVERSITY, METEOROLOGY DEPT.

620 Duncan Hall. (408) 924-5206. Prof. Alison Bridger. Tues and Thus. Free. At least 1 week in advance. Max number 50. No age limit but it is recommended a group be composed of children of similar age.

Tours are given by senior students. A tour mostly consists of show and tell, in class experiments, pictures and videos. It does not include a tour of most of the instruments since they are on the rooftop. A tour lasts about one hour.

FIELD TRIPS

SANTA CLARA COUNTY MODEL AIRCRAFT SKYPARK

Located off Monterey Road in Coyote Valley between San Jose and Morgan Hill.

Contact Mike, (408) 292-1212. Open 365 days, 8:30 am to dusk.

www.sccmas.org

Great place to spend the day watching model airplanes soar in the sky. Scout groups are more than welcome. They might even let you fly a plane if you call ahead. Weekend food service during regular season, March through November. 500 x 60 foot plus runway.

SANTA CLARA VALLEY AUDUBON SOCIETY

22221 McClellan Road, Cupertino, Ca. 95014. (408) 252-3747. Nature walk. Free.

Call 2 weeks to 1 month in advance and they will set it up. Max. 20 people, they may have to split into 2 groups. Limited, based on availability so call as far in advance as possible.

www.scvas.org

Children learn about the creek, trees, birds, and other wildlife associated with Stevens Creek. When weather permits, they can go wading in the creek. The Society provides binoculars, field guides, nets and other items to make learning fun for children. Also inquire about their "Young Audubon" program.

SOUTH BAY HISTORICAL RAILROAD SOCIETY

1005 Railroad Ave., Santa Clara. (408) 243-3969. Just off the Alameda. Call for directions. Open Sat, 10-3 and Tues, 6pm-9pm. Free. Special tours by arrangement (usually given Saturdays). Also free. Call the above number.

www.sbhrrs.org

Thousands of railroad artifacts. Railroad depot built in late 1863. Various operating scale model railroad displays. Special tour includes a railroad safety program.

SUNNYVALE HISTORICAL MUSEUM

235 East California (corner of Sunnyvale and California), Sunnyvale 94086. (408) 749-0220. Tues and Thurs, 12:00-3:30; Sun, 1:00-4:00; and by apt. Free.

This small museum captures the past with artifacts and pictures of pioneers.

THE TECH MUSEUM OF INNOVATION

201 South Market St., downtown San Jose 95113. (408) 294-8324. Daily, 10:00-5:00; special operating hours during Dec. holidays. Adults, \$9 for exhibits or Imax theater, \$16.00 for a combo ticket; ages 3-12, \$7 for exhibits or Imax, or \$13 for a combo; seniors 65 and older, \$8 for exhibits or Imax theater, \$15 for a combo. Discounts available for K-12 field trips, and group reservations of 20 or more.

www.thetech.org

Newly renovated and infinitely exciting. A lot of hands-on exhibits. A number of virtual reality exhibits. You can create and "ride" your own roller coaster. You can make an earthquake, control a remote operated vehicle (ROV) and you can even try "surgery." The Tech museum also houses the only domed I-max theater in California. The museum is located near the San Jose Museum of Art so you could make it a double field trip.

TRITON MUSEUM OF ART

FIELD TRIPS

1505 Warburton Ave., Santa Clara. (408) 247-3754 (info line). Mon-Wed, 11-5; Thurs, 11-9; Fri-Sun, 11-5. Admission free. Donations welcome.

www.tritonmuseum.org

Tours for children are normally scheduled for mornings, but you can arrange an afternoon tour.

VASONA COUNTY PARK

Please see the SANTA CLARA COUNTY PARKS map at the end of this section.

Also YOUTH SCIENCE INSTITUTE - VASONA CENTER.

VILLA MONTALVO

15400 Montalvo Road, Saratoga, CA. 95070. (408) 961-5800. Park & Grounds: Mon-Fri, 8-5; Sat-Sun & Holidays, 9-5. Arboretum: Mon-Fri, 9-5. Gallery: Wed-Sun, 1-4pm; Free. Hiking trails. Free.

www.villamontalvo.org

A Santa Clara County park. Nature trails traverse a redwood grove, hills and meadows, and flower covered arbors in the arboretum. Hiking maps available in Parking Lot #1.

WINCHESTER MYSTERY HOUSE

525 South Winchester Blvd. (between Stevens Creek Blvd and I-280), San Jose 95128. (408) 247-2000. 65-minute tours daily except Christmas. 9:00-5:00 in winter (last tour leaves at 5:00), 9:00-7:00 in summer (last tour leaves at 7:00); last tour leaves at 7 on Fri and Sat in spring and fall. Ages 13-64, \$17.95; ages 6-12, \$11.95; seniors, \$14.95; tots 5 and under, free when accompanied by a paying adult. Reduced group tour fees by reservation, min. 15 people. There is a behind the scenes tour but it is not available for ages 12 and under.

www.winchestermysteryhouse.com

This 160-room house is full of mysteries with its doorways opening to blank walls, secret passageways twisting around, and the number 13 appearing everywhere. The tour takes you through 110 rooms. A self-guided tour of the Victorian Gardens is included in the tour price. Special flashlight tours offered on a Friday, the 13th for \$23; ages 5 and under, free with a paying adult. There are also special tours at Halloween time for 3 nights only.

YOUTH SCIENCE INSTITUTE - ALUM ROCK NATURE CENTER

16260 Alum Rock Ave., San Jose 95127. The Alum Rock Ave. entrance is closed to cars but not foot traffic so you can still walk in through it. Use the Penitencia Creek Rd. entrance. (408) 258-4322. Tues-Fri, 12:00-4:30; closed Mon; call for weekends. Adults, 50 cents; children, 25 cents. Group size, up to 20 kids, self-guided. Call ahead for more information on their science and nature programs. Parking \$4. Call for programs for Cub Scouts.

www.ysi-ca.org/AlumRock/ARHome.html

It is a junior museum with an extensive collection of live animals, reptiles, amphibians, and birds.

FIELD TRIPS

YOUTH SCIENCE INSTITUTE - SANBORN NATURE CENTER

16055 Sanborn Rd, Saratoga 95070. Sanborn-Skyline County Park, off Highway 9. (408) 867-6940. Hours and days vary depending upon season so call ahead for them. Parking fee.

www.yisi-ca.org/Sanborn/SBHome.html

Located in a redwood forest, this is a junior museum with a live insect zoo. They are in the process of expanding their program.

YOUTH SCIENCE INSTITUTE - VASONA CENTER

296 Garden Hill Drive, Los Gatos 95032. Vasona County Park, off Blossom Hill Road. (408) 356-4945. Mon-Fri, 9-4:30. Closed weekends. Donations welcome. Parking fee, \$4.

www.yisi-ca.org/Vasona/VSHome.html

This junior museum features exhibits of aquatic life and dinosaurs.

THE PENINSULA

BAYLANDS NATURE INTERPRETIVE CENTER.

2775 Embarcadero Road (at the eastern end past the duck pond, look for the building on stilts), Palo Alto 94303. (650) 329-2506. Tues, Wed, 10:00-5:00; Thurs, Fri, 2:00-5:00; Sat, Sun, 1:00-5:00; closed Mon. Summer hours, Tues-Fri, 2-5; Sat-Sun, 10-5. Free. Groups by appt.

This bayside nature center is on pilings out in a salt marsh, handy for the nature walks and ecology workshops it excels in. You can arrange a docent-led nature walk or take a self-guided walk with a nature trail booklet provided by the center. The self-guided tour is free and there will be a 5-10 minute talk by the staff. Let them know if you are bringing a group of children even if you are taking a self-guided tour.

BURLINGAME MUSEUM OF PEZ MEMORABILIA

214 California Dr., Burlingame, CA. 94010. (650) 347-2301. Open Tues-Sat, 10-6. Admission is free.

www.burlingamepezmuseum.com

Features the world's largest public display of Pez candy dispensers. There are over 500 unique dispensers and Pez related memorabilia. Guided tours available with reservation.

COYOTE POINT MUSEUM FOR ENVIRONMENTAL EDUCATION

1651 Coyote Point Drive, San Mateo 94401. Coyote Point Park, off Poplar Ave from Highway 101. (650) 342-7755. Tues-Sat, 10:00-5:00; Sun, 12:00-5:00. Adults, \$6; students 13-17 and seniors, \$4; ages 3-12, \$2; children under 3, free. First Wed of the month, free. Gate fee for park, picnic areas, playgrounds, and beach, \$4 per car. Call for special tours. Self-guided tours in the field are excellent for Cub Scout groups. Free.

FIELD TRIPS

Times vary with tides. Groups of 20 or more are required to pre-register. Also can call and they will send you a handout on everything at Coyote Point.

www.coyoteptmuseum.org

The Environmental Hall is devoted to the understanding and appreciation of nature and our place in it. The separate Wildlife habitats house mammals, birds, amphibians and reptiles native to the Bay Area in their natural setting. Visit their new one-of-a-kind Honeybee Exhibit, and refurbished 4000 sq. ft. aviary. Call for docent-led tours and special programs.

DON EDWARDS WILDLIFE REFUGE

Environmental Education Center: Grand Blvd. near Zanker Road, Alviso. (408) 262-5513. Visitors Center: Marshlands Road, near Thornton Ave., Newark. (510) 792-0222. Call or check website for activities schedule. The refuge in Alviso is great for bird watching – they can set up custom hikes (Webelos Naturalist); Call for reservation at (408) 262-5513.

<http://desfbay.fws.gov>

FILOLI HOUSE AND GARDENS

86 Cañada Road, Woodside 94062. (650) 364-8300 ext. 507. Open Feb. 11 to Oct. 25, 2003; Tue. to Sat. 10:00-2:30. Filoli Nature Hikes: Individual and group tours and nature hikes by reservation. Adults and children over 12, \$10; students (with card), \$5; children ages 7-12, \$1; children under 7 are free.

www.filoli.org

Explore the many trails in the remote areas of Filoli. You can learn about the Indians who lived here many years ago and touch the San Andreas fault. Nature hikes are great for elementary school children.

FOOTHILL COLLEGE OBSERVATORY

On Foothill College campus in Los Altos Hills (Take 280 to El Monte Rd. exit) (650) 949-7334. Open for public viewing: clear Fri. nights 9:00 pm-11:00 pm; clear Sat mornings 10:00-12:00 noon (for Solar Viewing); closed if cloudy. Free. Facility next to Parking Lot 4. Parking \$2.00 (in quarters only for the machines). Good for all ages.

www.foothill.fhda.edu/ast/fhobs.htm

Attendance for Solar Viewing on Saturday is normally low. The observatory is the normal meeting place for the Peninsula Astronomical Society. Meetings are open to the public. Second Fri of each month at 7:30 in Room 5001 on the campus next to Parking Lot 5. Call William Phelps (650) 493-4742, if interested and for more information.

HILLER AVIATION MUSEUM

601 Skyway Road, San Carlos, CA 94070. (650) 654-0200. Daily 10-5. Adults, \$8; Seniors (65+), \$5; Youth (8-17), \$5; Under 8, Free. Special group rates for 15 or more people; call for reservations.

<http://www.hiller.org>

This museum contains a collection of aviation artifacts dedicated to man's concept of flight, and highlights the many historic advancements in aviation native to

Northern California. If you let them know in advance, they will arrange a docent for your group. They have the Young Eagles Program, where they will take children from ages 8-17 up in private planes for free. They also have a Flight Night where kids can build airplanes and then race them for prizes.

HIDDEN VILLA

26870 Moody Road, Los Altos Hills 94022. (650) 949-8650. Daily except Mon, 9:00-dusk. Farm tours, summer programs, environmental education programs, and individualized tours, by appt. Fees (depending on time of year). Parking \$5 per car. www.hiddenvilla.org

Hidden Villa's 1,600-acre wilderness preserve is relatively unchanged since the days when Ohlone Indians gathered food from its hillsides and took fish from its creeks. A self-guided tour of the farm area is available, as are four suggested wilderness treks.

LOS TRANCOS OPEN SPACE PRESERVE

www.openspace.org/preserves/los_trancos/los_trancos.html

The Los Trancos Open Space Preserve is an ideal spot to learn about earthquake related features. There is a good self-guiding trail with 13 trail stations. The trail is located on Page Mill Rd. between Hwy. 280 and Hwy. 35 (7 miles from the intersection of Hwy. 280 and Page Mill Rd.). Tours (given by volunteers) lasting about 2 hours are also available. For more information, contact the Midpeninsula Regional Open Space District at (650) 691-1200 or E-mail at mrobsd@openspace.org. Their website has a calendar that lists a lot of great hikes.

NASA AMES RESEARCH CENTER

Moffett field 94035. Off Highway 101. (650) 604-6274. Visitor Center open Mon-Fri, 8:00-4:30. Visitors center is free. There are No public tours due to lack of resources, only visitors center open to public. They are trying to restart the tours in the new year so call for updated tour information. Closed federal holidays. You will come to a 4-way stop before the guard, turn left and keep going until you see the space shuttle in front of the Visitors Center.

Public tours and field trips are no longer offered.

SANCHEZ ADOBE HISTORIC SITE

1000 Linda Mar Blvd (off Highway 1, 1 mile east of Hwy. 1 in Pacifica), Pacifica 94044. (650) 359-1462. Tues-Thurs 10:00-4:00; Sat and Sun, 1:00-5:00, and by appt. Free. Call ahead to see if they have any field trips for Cub Scouts.

Built in 1842, the adobe still stands, filled with artifacts from the Costanoan Indians who lived here first, Victorian furniture, and rancho items.

STANFORD UNIVERSITY

Stanford University Campus, Stanford, CA. 94305. (650) 723-2300 or (650) 723-2560 for info. Stanford campus tours daily, 11 and 3:15 for 1 hour. Free. Call for tour reservations – no tours during 1st week of classes, final exams or academic holidays. www.stanford.edu and www.batnet.com/pacc/VISITORS/attract.html#SUNV

FIELD TRIPS

Hoover Tower Observation Platform, (650) 723-2053: Mon-Sun 10:00-4:30 when school is in session: adults, \$1; children, 50 cents. Closed until April, 2002.

Jasper Ridge Biological Preserve, (650) 327-2277: tours by appt., free.

<http://jasper1.stanford.edu>

U.S. GEOLOGICAL SURVEY

345 Middle Field Rd, Menlo Park, 94025. (650) 853-8392 ex. 5392 for tours/853-8300.

Various programs and tours available. Call at least three weeks in advance.

www.usgs.gov

This is a great place to go for the Webelos Geologist activity badge. Speakers are available.

SANTA CRUZ

ANO NUEVO STATE RESERVE

Docent-led walks to the elephant seal breeding ground, December through March. Call California State Park hotline (800) 444-PARK. Maximum 20, \$4 per person. Can make reservation up to 56 days in advance. For reservations call (800) 444-4445. Ano Nuevo SR Office: (650) 879-2025 (not for reservations).

www.anonuevo.org or www.cal-parks.ca.gov

You must make a reservation during the breeding season, but reservation is not necessary after April 1 and it's free. You can still see elephant seals well into April. It may be a better time to go if there are a lot of small children.

BIG BASIN REDWOODS STATE PARK

20 miles north of Santa Cruz via Hwy. 9 and 236. (831) 338-8860. This number is an automated message that is updated frequently and is full of information. Park open daily 6:00am-10:00pm. Visitors Center open Sun-Thurs, 9-5; Fri-Sat, 8-8. Nature lodge open 10-5. \$3 per vehicle. In the summer there are interpretive programs, campfires, and other programs for Cub Scouts. Call for more information.

www.bigbasin.org

Great place for hiking and family camping. Large group sites available with easy access. For reservations call (800) 444-7275.

LONG MARINE LAB AND AQUARIUM

100 Shaffer Road, Santa Cruz, CA. 95060. West edge of Santa Cruz, past the end of Delaware Ave., near Natural Bridges State Park.

(831) 459-3799. Tues-Sat, 10-5; Sun, 12-5; closed Mon. Adult, \$5; seniors and ages 6-16, \$3; under 6, free. Everyone free on 1st Tues of month. On-going docent-led tours daily at 1, 2, and 3pm. First come first serve. There are 20 people per tour, sign-ups 1 hour before but with a large group it will be nearly impossible to get signed up on a tour. Center is self-guided. Fee for reserved tour. Need reservation if more than 10 in group. Administrative fee of \$25 per group of 20.

<http://seymourcenter.ucsc.edu>

Combine this trip with your outing to Natural Bridges. Allow 45 min to 1 hour.

NATURAL BRIDGES STATE BEACH

North of Santa Cruz. (831) 423-4609 for information on activities. Parking, \$3 per vehicle but can park outside and walk in for free. Both tide pool and butterfly grove tours are free. Reservations must be made 15 days in advance. Min, 10 people. Max group size, 35 people with 1 adult per 7 kids. \$1 per person donation. Reservations must be made by phone (no mail), cannot be made by someone else for you. There are free public tours on the weekends. Call for all info.

www.cal-parks.ca.gov

You can arrange docent-led tide pool tour any time of year or monarch butterfly grove in late fall, mid Oct. to end of Feb. Call for low tide days or butterfly population. Kids love playing on the sandy beach.

ROARING CAMP AND BIG TREES NARROW-GAUGE RAILROAD AND SANTA CRUZ, BIG TREES & PACIFIC RAILWAY COMPANY

P.O. Box G-1, Felton 95018. Take Highway 17 to the Mt. Hermon Road, exit in Scotts Valley, then drive west 6.5 miles to the end of the road at Felton, and left onto Graham Hill Road. (831) 335-4400. Big Trees Narrow-gauge Railroad: Adult, \$17.00; ages 3-12, \$12.00; under 3 (sitting on parent's lap), free. Call for schedule for both and fares for Big Trees and Pacific Railway. Group rates available. Parking, \$5.

www.roaringcamp.com

Great steam locomotives hiss and puff through the redwoods on the steepest narrow-gauge railroad grade in North America and around the tightest turns to the top of Big Mountain.

WILDER RANCH STATE PARK

2 miles North of Santa Cruz off Hwy. 1. (831) 423-9703. Open 8-sunset everyday. Reservations necessary for groups at least 15 days in advance, if tour is desired. Docent led tour: Free. Parking \$3 per car. No dogs allowed. Call for group tours of 10 or more. Call for Visitors Center and Historic Ranch Buildings hours. Living History Demonstration, Sat-Sun, 11-3. Docent-led Ranch Tours, Sat-Sun, 1 pm. Docent-led nature walks, Sat. 11 am, meet in front of visitors center. Call for more information and to verify all tour times.

www.cal-parks.ca.gov

Docent led tours of historical ranch and demonstrations of old-time skills. Children enjoy old-fashioned games. Trails along the sea cliffs to the Old Cove Landing and through the ranch's 4,000 acres of back country, with spectacular views of Monterey Bay.

GILROY-WATSONVILLE-MONTEREY

ELKHORN SLOUGH

1700 Elkhorn Rd., Watsonville, CA. 95076 (831) 728-2822. Open Wed-Sun, 9-5. Admission Free to Visitor Center and picnic areas. To walk the trails, \$2.50 day-use fee for ages 16 and older; children free. Interpretive guides lead nature walks every Sat. and Sun. at 10am and 1pm.

www.elkhornslough.org

The slough is a great place for bird watching. The visitor will loan you binoculars and bird books for free. The visitors center has some interesting exhibits including a nine-times larger than life-size model of life in the mud, complete with a four-foot fat innkeeper worm.

GIZDICH RANCH

55 Peckham Road, Watsonville, CA. 95076 (831) 722-1056. Open daily 9-5. Call for tours of the apple orchard. Call August 1st through September. \$4 a child; adults are free.

www.gizdichranch.com

Pick your own strawberries available from May to July, Olallies in June, and Raspberries in July. Pick your own apples in early September. Tour their apple juice factory. It's a bit far but great for a family outing.

MONTEREY BAY AQUARIUM

886 Cannery Row, Monterey, CA. 93940. (831) 648-4888. Open daily, 10-6; summer and holiday weekends, 9:30-6. Closed December 25. Admission: adults, \$17.95; over 65 and children 13-17, \$15.95; ages 3-12 and disabled \$8.95; under 3 Free. Group rates available for 20 or more; Call (831)648-4860 for group reservations.

www.montereybayaquarium.org

Three story kelp forest, spectacular exhibits, hands-on exhibits. Watch sea otters play outside in the water. Allow minimum 3 hours. (The aquarium does have an overnight program but it is open to members only.)

MOUNT MADONNA COUNTY PARK

7850 Pole Line Rd, Watsonville, CA. 95076. On Highway 152, ten miles west of Gilroy. (408) 842-2341 (information). Reservations call (408) 355-2201. Mon-Fri, 8:30-3:30.

www.openspacecouncil.org/Camp/Madonna.htm

Great place for the pack family camp.

THE MYSTERY SPOT

465 Mystery Spot Rd., Santa Cruz 95065. Call ahead for directions and more information. (831) 423-8897. Daily, Summer: 9-7; Winter 9-4:30. General admission, \$5; under 3, free. Tours and group rates for 10 or more people.

www.mysteryspot.com

This is a section of a redwood forest where the law of gravity does not seem to apply. Great fun!! Everyone loves it!!

SWANK FARMS

2600 San Felipe Road, Hollister, CA. 95023. (831) 637-4704. Hours: Mon-Thurs., 10-9; Fri-Sat, 10-12; Sun 10-10. Also open October 30 and 31. Day prices: \$8; kids 5 and under, free. Night prices (starting at 6): \$10; kids 5 and under, free.

www.swankfarms.com

You can walk through a 12-acre corn maze and check out the Conover Mystery Ranch haunt after 7 on Fri-Sun. For groups of ten or more people, there is a 20% discount with a reservation. Call (831) 636-1295 or e-mail bkistler@hollinet.com for reservations.

ALAMEDA AND CONTRA COSTA COUNTIES

ARDENWOOD HISTORIC FARM

Ardenwood Regional Park, 34600 Ardenwood Blvd (at Highway 84), Fremont 94555. (510) 796-0663. Tues-Sun, 10:00-4:00. Closed holidays (the grounds are open without black smithy, hay ride, or wagon ride for \$1). Adults, \$5.00; seniors, \$4.00; kids 4-17, \$3.50; under 4, free. Rain may close the park. Tues-Sun in winter, reduced prices, adults and seniors, \$1; ages 4-17, \$0.50. House tours by appt. Special event fees vary. In the winter there are no house tours, train rides, or blacksmith. From April to the middle of November, the house tours, wagon rides, and blacksmith are open only on Thursdays, Fridays, and Sundays. Call above number then press 1 for more information on prices. Check for availability of wagon rides, they were trying to get a new wagon team so check if they got it.

www.ebparks.org/parks/arden.htm

You can tour a remarkably well-restored Victorian farmhouse, built in 1857, or go on a hay ride and a wagon ride. Or ride on the Deer Park train. Tour their blacksmith shop. In fall, children can help with the harvest and get to take some produce home. Call for information about special events.

BLACKHAWK AUTOMOTIVE MUSEUM

3700 Blackhawk Plaza Circle, Danville 94506. (925) 736-2277. Wed-Sun, 10:00-5:00. Closed major holidays (Christmas, New Years, and Thanksgiving) Ordinary prices: adults, \$8; students and seniors 65 and up, \$5; children ages 6 and under, free with adult. No charge for Cub Scouts and special docents are available as long as you call in ahead. Tours by appt. at least 2 months in advance and public tours are available every weekend at 2:00 pm.

www.blackhawkauto.org

The Behring Classic Car Museum shows rare classic automobiles. It showcases Kenneth Behring's \$100-million collection of custom-built and one-of-a-kind automobiles.

FIELD TRIPS

The UC Berkeley Museum of Art, Science and Culture features collections of artifacts dating back to 3500 B.C. The museum contains a nine-million-year-old mastodon found in the Blackhawk Quarry Site.

CHABOT SPACE AND SCIENCE CENTER

10000 Skyline Blvd., Oakland, CA. 94619. (510) 336-7300. *Wed-Thurs, 10-5; Fri-Sat, 10-10; Sun, 12-5; closed Mon-Tues. General Admission: adults, \$11; children 4-12 and seniors 65 and older, \$8; under 4, free. Admission to either planetarium or megadome: adults, \$6; children 4-12 and seniors 65 and older, \$5; under 4, free. There are also special telescope viewings every Friday and Saturday from 7-10 pm in the months of November-March, and dusk-11 from April-October. Call ahead to see if they are doing it and for more information.*

www.chabotspace.org

The changing two-hour show includes a movie, science demonstration, planetarium program, and observation of the night sky through a large telescope.

CHILDREN'S FAIRYLAND

699 Bellview, Lakeside park, Lake Merritt, Oakland, CA. 94610. *Intersection of Grand and Bellview. (510) 452-2259. Spring and fall, Wed-Sun, 10:00-4:00; winter, Fri-Sun and school holidays, 10:00-4:00, weather permitting; summer, Mon-Fri 10:00-4:00, Sat-Sun 10:00-5:00. \$6.00 per person; children under 1 and over 100, free. Children not admitted without an adult, adult not admitted without children. Picnic areas available.*

www.fairyland.org

Duck through the Old Woman's Shoe to meet Alice and many other fairy tale characters. Great for Tigers and Wolves. There will be puppet shows, check for times.

USS HORNET

Pier 3, Alameda Point, Alameda, 94501. *At the former Naval Air Station. (510) 521-8448. Open Mon and Wed-Sun, 10:00am-5:00pm; closed Tuesday. Admission gate closes at 4:00pm. Ship closes at 5:00pm. Closed Thanksgiving, Christmas, and New Year's Day. General Admission: Adults, \$12; seniors 65 and older, \$10; youth ages 5-18, \$5; children 4 and under, free. Group rates available with advance reservations for 15 or more people.*

www.uss-hornet.org

This aircraft carrier is a floating museum.

An OVERNIGHT (Live-Aboard Program) experience is also available to Scouts. Call (510) 521-8448 x235 for more information and for fees. An on-line application packet is available (www.uss-hornet.org/documents/live_ aboard_Packet.pdf). You go on the aircraft carrier and sleep in restored berthing compartments of real Hornet sailors. Enjoy dinner and breakfast in the officer's mess. Hear stories, watch historic movies, and play shipboard games. Participate in night watch. Earn special souvenir patches and junior crewmember certificates. And receive free admission to the museum and free flight simulator rides.

LAWRENCE HALL OF SCIENCE

1 Centennial Drive, University of California, Berkeley, CA. 94720 (on the Berkeley Campus). Up Hearst to the top of the university to Gayley Road, to Rim Way, to Centennial. Just south of Grizzly Peak Blvd. (510) 642-5132. Daily 10:00-5:00. Adults, \$8.50; students (5-18) and seniors (62+), \$6.50; ages 3-4, \$4.50; under 3, free. Group rates for 12 or more people available by calling 510-642-5134 at least 4 weeks in advance. Star gazing at 8 p.m. 1st and 3rd clear Saturday of every month (call ahead to see if they are having it), free.

www.lawrencehallofscience.org

They have a variety of exhibits, science workshops, tests of your mathematical and logical ability, computers to play with, visual oddities and a lot more. Holt Planetarium offers shows. Call for current exhibits and hands-on activities.

MISSION SAN JOSE

43300 Mission Blvd., Fremont 94539. At the intersection of Washington and Mission. (510) 657-1797. Daily, 10:00-5:00. Closed holidays. Prices: adults, \$2; children, \$1. Reservations required for large groups (10 people and up).

Mission San Jose was founded in 1797. The mission church has been reconstructed with hand-hewn beams and more than 180,000 adobe bricks. The mission features an exhibit on the Ohlone, the native people of the Bay Area. Self-guided tour. Guided tour is available for a group of 25 or more.

NEW UNITED MOTOR MANUFACTURING, INC.

Fremont Blvd., Fremont. (510) 498-5500. Free. POPULAR!! Call early for reservations. Tour line: (510) 770-4008 (NOTE: it may be two or more weeks before your call is returned). 2 tours daily, Tues-Fri, 10:00-11:30 and 1:00-2:30, reservation required. Min age is 10 yrs. old. No cameras, required Safety Attire: long pants and closed toe shoes. Max. 48 people. Tours should be booked 3-4 months in advance (4-6 months for large groups).

www.nummi.com

Boys and adults both love this tour. The facility was built with tours in mind so you can see a lot. Unfortunately it is very popular and you have to book months in advance. Call and ask and they will try to schedule you in.

THE OAKLAND MUSEUM

1000 Oak St., Oakland, CA. 94607. (510) 238-3402. Informational message (510) 238-2200. Wed-Sat, 10:00-5:00; Sun, 12:00-5:00. 1st Friday of every month open 10-9. Closed Mon, Tues and holidays. Adult, \$8; seniors and students, \$5; 5 and under, free. Free 2nd Sunday of every month. Group rates available for groups of 10 or more. 50% discount on admission for non-profit groups.

www.museumca.org

You can spend a whole day in its exhibits on California art, natural sciences, and history. There are special exhibits and events as well. One block from the Lake Merritt BART Station. Park the car in Fremont and take BART to the museum.

OAKLAND ZOO

9777 Golf Links Rd. off I-580. (510) 632-9525. Zoo open daily, 10-4, weather permitting. Closed Thanksgiving and Christmas. Parking \$4 per car or van; Admission: adults, \$8.50; seniors (55+), and children ages 2-14, \$5.00; children under 2 are free. Group rates for 12 or more people; adults, \$4.50; children and seniors, \$3.50. For group reservations call 510-632-9525 x142; 2 weeks notice, plus \$50 deposit required.

www.oaklandzoo.org

More than 300 exotic and native animals in naturalistic habitats. Children's zoo. An aerial tram affords a bird's-eye view of the area.

PACIFIC LOCOMOTIVE ASSOCIATIONS MUSEUM

Niles Canyon, Sunol. (925) 862-9063. Suggested donation, \$3.

Take a 12-mile ride on a steam train the first and third Sundays of every month. Call for directions.

SAN FRANCISCO BAY NATIONAL WILDLIFE REFUGE

Near intersection of Highway 84 and Thornton Ave., Fremont 94536. At the east end of the Dunbarton Bridge, near the toll plaza off Thornton Ave, exit right on Thornton. (510) 792-3178. Visitor Center, Tues-Sun, 10:00-5:00. Free.

Weekend interpretive programs, nature study walks, slide and film presentations and other classes are available. For a trail walk through the marsh and diked ponds, call the center.

TILDEN LITTLE TRAIN

Tilden Park in Berkeley. (510) 548-6100. Open on weekends, year round from 11am to dark. Also open weekdays in the summer. The price is \$1.75 for one ride, \$7.00 for five. Children under 2 ride free.

A 1.25-mile ride on this miniature railroad offers spectacular views of the bay.

WESTERN AEROSPACE MUSEUM

Oakland Airport North field, 8260 Boeing St, Oakland 94614. At Doolittle Drive and Hegenberger on Boeing Street, look for the signs. (510) 638-7100. Wed-Sun, 10:00-4:00. Adults 13 and older and seniors, \$6; children 6-12, \$2; 5 and under, free.

Additional \$2 for a tour of the Flying Boat. Reservation for docent-led tours required.

www.western aerospace museum.org

Ten antique and retired aircraft along with Challenger forward command modules, and a space shuttle. There are also bombers and fighters. Additional charge to tour the Short Solent, a large flying boat used in Raiders of the Lost Ark.

SAN FRANCISCO

ALCATRAZ ISLAND CRUISE AND TOUR

Pier 41, San Francisco 94133. (415) 705-5555. Frequent sailings on the Blue and Gold Fleet daily. First ferry leaves at 9:30, then from 10:15-2:15 they leave at intervals of 1/2 an hour in winter. In summer till 4:15. Last ferry to leave Alcatraz, 4:30 in winter. In summer, 6:30. Adults 12 and older, \$16.00; seniors 62 and older, \$14.25; children 5-11, \$10.75; 4 and under, free. These prices include a self-guided tour of the prison, a museum, a video movie, an audio cassette, and a round trip ferry ticket. For a tour without audio cassette, adults, \$11.50; seniors 62 and older, \$9.75; children 5-11, \$8.25. Open daily except Christmas and New Years. Unlimited time for tour. \$2.25 handling fee for buying tickets by phone. Call ahead for more info. Call (415) 705-8214 for group services. No \$2.25 service charge for groups 15 people and over if go through group services. Rates are the same though. Make reservations in advance for groups. In the winter 2-3 weeks in advance. In the summer 1 month in advance.

www.telesails.com/Alcatraz/alcatraz.html

Wear walking shoes and bring a sweater. Self-guided tour takes approx. 2 to 2 1/2 hours.

BASIC BROWN BEAR & COMPANY TEDDY BEAR FACTORY

444 DeHaro St., San Francisco 94107. At Mariposa on Potrero Hill. (415) 626-0781. Store hours: daily, 10-5. To stuff a bear, \$12-\$150.

www.basicbrownbear.com

You can see different kinds of teddy bears cut and stuffed right in front of you. You can even stuff your own (for the price of a bear). Call for tour hours.

CABLE CAR MUSEUM

1201 Mason Street (at Washington Street), San Francisco 94108. (415) 474-1887. Open daily, 10-6; Oct-March, 10-5. Closed Thanksgiving, Christmas, and New Year's Day. Self-guided tours. Admission Free; donation optional.

www.cablecarmuseum.com

All three cable car lines in San Francisco are run by the huge revolving red and yellow wheels in the brick cable car barn, built in 1887. Visitors can watch the wheels from a gallery, where there are samples of the cable itself and charts explaining how the cable cars work. Because of the noise level, guided tours with docents are not available.

CALIFORNIA ACADEMY OF SCIENCES

Note: The California Academy of Science is closing in Golden Gate Park on Dec. 31, 2003. It will reopen at 875 Howard St. in downtown S.F. in Spring 2004.

Golden Gate Park (south side of Music Concourse), San Francisco 94118. Taped information (415) 750-7145; switchboard (415) 750-7000. Daily (open throughout the year), 10:00-5:00. Summer, daily 9:00-6:00. Adults, \$8.50; Seniors (65+) and ages 12-17, \$5.50; ages 4-11, \$2; under 4, free; free the first Wed of the month. Free Wednesdays are open until 8:45. Visitors arriving by bus or bicycle receive \$2.50 off adult admission. Children under 12 arriving by bike or bus get in free. For admissions call (415) 750-7426. Longer summer hours.

www.calacademy.org

The Academy houses Morrison Planetarium, Steinhart Aquarium, and Natural History Museum. The Planetarium offers the Sky Show. Sky Shows varies according to seasons, times also vary so call ahead at (415) 750-7127 (only offered Mon-Fri, 9-5). Sky Show, adults, \$2.50; ages 6-17, \$1.25; under 6, free with paying adult (not recommended for children under 6). The Laserium is now closed. For information on the Sky Show and the Planetarium call (415) 750-7141 (recorded).

THE CHINESE CULTURE CENTER

750 Kearny, in the Holiday Inn, third floor, San Francisco, CA. 94108. (415) 986-1822. Tues-Sat.10-4; Free. Gallery open Tues-Sun, 10-4. Tours of China Town by appt., fees.

www.c-c-c.org

The Heritage walk is a tour of historic sites, a market place, and other places of interest. The Culinary walk involves a trip to the hardware store to get cooking utensils, shopping at market places, a visit to a factory (noodles or fortune cookies), and a lunch at a Chinese restaurant. Cultural, historical, and artistic exhibitions are presented. They also conduct a tour of Chinatown for a fee. The tour includes a talk on Chinese culture, and a visit to a Chinese temple, a Chinese store and an old fashioned fortune cookie factory. Saturday tours are available.

THE EXPLORATORIUM

Palace of Fine Arts, 3601 Lyon Street, San Francisco 94123. Between Marina Blvd and Lombard. (415) 561-0360. Tue-Sun, 10:00-5:00. Closed Mondays, but open on holiday Mondays other than Thanksgiving and Christmas. Adults, \$12; seniors (65+) and ages 13-17 and people with disabilities, \$9.50; ages 4-12, \$8; under 4, free. Free first Wed of the month. Tactile Dome reservation (415) 561-0362. \$15.00 for ages 7+ to enter the Tactile Dome (includes general admission). Groups (415) 561-0308 (advance reservation is necessary for group rates). Call for group rates. Administrations office, (415) 563-7337 (9-5, 7 days a week). Can arrange tours through Reservations.

www.exploratorium.edu

This is a touchingthinkingpullingsplashingblinkingspinningopeningclosingamazing museum of science, art, and human perception. Have an adventure in the dark in the Tactile Dome. Call for special events.

FORT POINT NATIONAL HISTORIC SITE

San Francisco 94129. Foot of Marine Drive, on Presidio grounds, under San Francisco end of the Golden Gate Bridge. (415) 556-1693. Open Friday-Sunday, 10:00-5:00; closed Monday-Thursday for bridge retrofit, and holidays. Guided tours at 11:00 and 3:00, cannon demonstrations at noon. Free. Fort Point Bookstore open 10-4:30.

www.nps.gov/fopo

Fort Point, built during the Civil War, is the only brick coastal fort in the West. Roam through the officers' and enlisted men's quarters, and walk through the huge casements where once were mounted more than 100 huge cannon.

MUSEE MECANIQUE

Pier 45, Fisherman's Wharf, San Francisco, CA. 94133. (415) 346-2000. Mon-Fri, 11-7; Sat-Sun and holidays, 10-8. Admission Free.

www.museemecanique.citysearch.com

Add this unique museum to your trip to Fisherman's Wharf. This museum contains one of the largest collections of antique coin-operated mechanical musical instruments in the world. All of the "Penny Arcade" machines are in their original working condition so the public can enjoy them in their original form. Bring lots of pennies to play the 170 machines.

NATIONAL MARITIME MUSEUM AT SAN FRANCISCO

(San Francisco Maritime National Historic Park)

900 Beach Street (at the foot of Polk Street), San Francisco 94109. (415) 556-8177.

Daily, 10:00-5:00; until 5:30 in summer. Call for calendar of events. Museum is free.

www.maritime.org

The maritime history of San Francisco lives on here in models of clippers, British ships, iron ships, schooners, barkentines, cutters, and cod fishers. Combine this with a tour of Hyde Street Pier, within easy walking distance. The Hyde Street Pier has 7 vessels as well as a collection of small boats.

SCOUT OVERNIGHT on a tall ship or a WW II submarine is available.

See USS PAMPANITO or the C.A. THAYER

PALACE OF THE LEGION OF HONOR

34th Avenue & Clement St., Lincoln Park, San Francisco, CA. 94121. (415) 863-3330.

Tues-Sun, 9:30-5:00. Adults, \$8; Seniors, \$6; ages 12-17, \$5; ages 11 and under, free.

Free admission every Tuesday. Docent lead tours for grades K-12 are available Tues-Fri; call 415-682-2483 to schedule reservation (call 8 weeks in advance).

www.thinker.org/legion

This museum has one of Rodin's most famous works, *The Thinker*. A gallery tour and art class is available for children 3½ to 12 on Saturday mornings from 10:30-12:00. Class size is limited. Included with entrance fee. No pre-registration required.

SAN FRANCISCO HISTORIC SHIPS AT HYDE STREET PIER

(San Francisco Maritime National Historic Park)

Hyde Street Pier (at Aquatic Park), San Francisco 94109. (415) 556-6435. Daily, 9:30-

5:00, gates closed at 4:30. Open until 5:30 in summer. Closed Thanksgiving, Christmas, and New Years. Ages 17 and over, \$15; 16 and under, \$10. For group tours (415) 561-7100. Free for group tour. Call ahead for reservation if you want it to be free.

www.maritime.org

You can tour the Balclutha, one of the last surviving square-rigged Cape Horners; the C. A. Thayer, lumber ship turned into a salmon packet, which celebrated her 100th birthday a few years ago; and the old ferryboat Eureka among other historic ships. A free guided tour will take one hour. You need to make advance booking during the school year. Weekend tours are also available. Environmental Living Programs are also available by appt.

SAN FRANCISCO MUSEUM OF MODERN ART

151 Third St. (between Mission and Howard), San Francisco, CA. 94103. (415) 357-4000. Open Mon-Tues, 11-6; Thurs, 11-9; Fri-Sun, 11-6; Closed Wed. and major holidays. Adults, \$10; seniors (62+), \$7; students, \$6; ages 12 and under, Free. Free admission first Tuesday of the month. Group rates for groups of 10 or more: Adults, \$8; seniors, \$5; students, \$4.

www.sfmoma.org

The museum has a nice collection of modern and contemporary art.

SAN FRANCISCO ZOO

Sloat Blvd and 45th Ave., 1 Zoo Rd, San Francisco, CA. 94132. (415) 753-7080 (recording, press 0 for an operator). Open every day of the year including weekends and holidays from 10:00-5:00. Children's Zoo open 11-4. Adults, \$10; seniors 65 and older, \$7; ages 12-17, \$7; ages 3-11, \$4; children 2 and under, free (cheaper for San Francisco residents). Free day: first Wed of every month. On free day ONLY, there is a \$2 admission fee to the Children's Zoo for children 3 and older. Every other day the Children's Zoo price is included in the admission fee. Free admission available to some non-profit groups; call 415-753-7057 for information.

www.sfzoo.org

Visit Children's Zoo, especially the Insect House. Check schedule for big cat and penguin feeding times.

SS JEREMIAH O'BRIEN

Pier 45, San Francisco near Fisherman's Wharf. It is moored on the same pier as the Pampanito, right behind it. (415) 544-0100. Open daily except major holidays and when cruising. Open 10-4. Adults, \$7; seniors, \$5; kids 6-14, \$3; under 6, free. Self-guided.

www.ssjeremiahobrien.com

WW II Liberty ship. Crew members on board to answer questions.

THAYER, C.A.

(San Francisco Maritime National Historic Park)

Hyde Street Pier. Call ahead. (415) 292-6664.

www.maritime.org

This schooner is over a 100 years old. An overnight program for Scouts is available for children age 6 and above. The program begins on Saturday at 7:30 p.m. with a 2-hour interpretive program of tying knots, singing sea shanties, hoisting the sail, riding a bosun's chair into the rigging. (This part of program is flexible and staff will adapt it to your needs and interests.) Videos on schooners are available. There is no night watch on the Thayer. Depart after breakfast. Take your own breakfast. There is no path available to go out for breakfast. Cost is \$20 per person, available only on Saturday night (goes till Sunday morning). Minimum 20 people, maximum 45 people. Reserve at least two months in advance. They have activities suitable for age groups so call and ask for reservations. Booking Office (415) 561-6662 ex. 30.

USS PAMPANITO

FIELD TRIPS

(San Francisco Maritime National Historic Park)

Pier 45 (near Fisherman's Wharf), San Francisco 94133. (415) 775-1943. Hours: until May 31, Sun-Thurs, 9-6; Fri-Sat, 9-8. After May 31, daily 9-8 except Wed, on Wed, 9-6. Self-guided tour; Adults \$7; seniors 62 and older, \$5; 6-12, \$3; under 6, free with adult. <http://www.maritime.org/pamphome.htm>

This World War II-vintage submarine is a floating museum. Self-guided tours through the cramped quarters are explained via audiotape.

An OVERNIGHT experience is also available for \$20 per person for weeknights, \$26 for Friday or Saturday nights. (25 persons min, 48 persons max) A minimum 1:6 ratio of adults to children under 18 is required, and a minimum of 7 adults with any sized group. A \$100 non-refundable deposit is required within 30 days of making the reservation, and is applied to your group's total fee. You go on the submarine after dinner, learn about the submarine, watch a movie about the "silent service," sleep in the quarters, and do one-hour night watch, one of the most fun experiences for many boys. Depart after breakfast. Take your own breakfast. Overnight crew patch is available for cost. Book weekends at least a year in advance. Booking Office (415) 561-6662 ex. 30. The email address for the overnight program is pclark@maritime.org. Go to the Pampanito Scout page (<http://www.maritime.org/scout.htm>) for detailed information on planning the overnight trip, including required paperwork, fees, rules of conduct, and logistics.

NORTH BAY

ANGEL ISLAND STATE PARK

P.O. Box 866, Tiburon 94920. (415) 435-3522/435-1915-recorded info line. Open daily, 8-sunset. For ferry schedules and fees from Tiburon, call Angel Island Ferry (415) 435-2131. For ferry schedules from San Francisco, call Red & White Fleet (415) 546-2803. Cheaper to go from Tiburon (ferry and parking). Classes and tours available. Send \$2 to the Angel Island Association at the P.O. Box number and address above for information packet and map of Angel Island. The website has information and a place where they will send you more information.

www.angelisland.org

Angel Island was the Ellis Island of the Pacific for Asian immigrants. Today, you can spend the day visiting historic sites and buildings or hiking, or stay overnight at one of its environmental sites.

On weekends, April to October, Camp Reynolds, Fort McDowell, and the Barracks Museum at the Immigration Station are staffed by docents who'll give tours and tell stories. There are cannon firings too.

MUIR WOODS NATIONAL MONUMENT

Muir Woods Road (off Highway 1), Mill Valley 94941. (415) 388-2595 (information). Call (415) 388-2596 for a real person. Twelve miles north of the Golden Gate Bridge. Daily, 8:00 to sunset, beach and overlook open from 9:00-sunset. Reservations for large

FIELD TRIPS

groups. Special events, employees, educational programs, (415) 388-2596. Ages 17 and up, \$2. Best time to visit is mid-week in the morning or late-afternoon. Parking is limited to what the woods can handle. Nice trails and day hikes. Call ahead for ranger talks (15-20 min) for your group. They will also do the Junior Ranger program with them, ask for it when you call for the ranger talk.

www.nps.gov/muwo

This is a forest of giant coast redwoods, some more than 200 feet high. There are several self-guided trails. Junior-ranger packs are available to young naturalists. Salmon viewing in winter. Great number of ladybugs in spring.

POINT REYES NATIONAL SEASHORE

National Park Service, Point Reyes, CA 94956. On Highway 1 near Olema. (415) 464-5100. Free. Open from 6am-midnight. No overnight parking is allowed unless you are camping. For overnight reservations call (415) 663-8054 (9-2, Mon-Fri). There is a \$10 per night camping fee (more for larger groups). Ranger led programs some weekend afternoons, call for schedule.

www.nps.gov/pore

You can follow nature trails, birdwatch, backpack, picnic, rent horses, and camp. Bear Valley Visitors Center offers classes and special programs. You can visit the Point Reyes Lighthouse.

SAN FRANCISCO BAY MODEL

2100 Bridgeway, Sausalito, CA. 94965. 415-332-3870 (recorded message) 415-332-3871 (Office). Tues-Sat, 9-4; Summer Hours: Tues-Fri, 9-4; Sat-Sun, 10-5. Admission & parking Free; donations accepted.

www.spn.usace.army.mil/bmvc or www.baymodel.org

The Bay Model is a working three-dimensional hydraulic model of the San Francisco and Delta areas capable of simulating tides, currents and river inflows. The model is over 1.5 acres in size and represents an area from the Pacific Ocean to Sacramento and Stockton including the San Francisco, San Pablo and Suisun Bays, and a portion of the San Joaquin Delta.

This is a great field trip for the Webelos Scouts working on their engineering badge. The US Army Corps of Engineers can teach the boys about geography, hydrology and navigation.

OUTSIDE THE BAY AREA

COLOMA

MARSHALL GOLD DISCOVERY STATE HISTORIC PARK

276 acres on SR 49, includes the 1860 cabin in which James Marshall lived. A statue of Marshall points toward the site of his discovery. A replica of Sutter's sawmill stands in the main part of the park. Visitors center, museum, picnic facilities are available. "Mr. Marshall" makes a personal appearance most Sundays. Park is open

daily from 8 to sunset, museum and historic buildings are open from 10 to 4:30. Museum is closed Jan 1, Thanksgiving, and Christmas but the grounds are still open. Day use fee \$5 per private vehicle. Call (530) 622-3470 for more information.

FOLSOM

FOLSOM DAM TOURS

TOURS SUSPENDED FOR AN INDETERMINABLE TIME.

Tours are scheduled from Monday through Saturday at 10:00 am, 12:00 noon, and 2:00 pm. Free. Call (916) 989-7275 for information and direction. Tours are limited to 50 persons. Drop-ins for small parties might have to join a large group. For more information (an actual person) call the American River Water Education Center at (916) 989-7100.

HISTORIC FOLSOM POWERHOUSE

This powerhouse performed the first long-distance transmission of hydroelectric power to Sacramento in 1895. Tours Wed-Sun, noon-4:00 pm. Free. (916) 985-4843 or 985-4842 for more information and directions. Make reservations if have 10 or more people.

FAIRFIELD

JELLY BELLY FACTORY

One Jelly Belly Lane, Fairfield, CA.94533 Herman Goelitz Candy Co., Inc., Makers of Jelly Belly jelly beans and more. The candy-making demonstration kitchen in the Visitor Center operates daily; visitor center open daily 9-5. The Visitor Center and factory are closed on Thanksgiving Day, Christmas Day, New Year's Day, and Easter Sunday. They may also be closed the day before or after these holidays. Visitors should always call to verify dates and hours of operation prior to planning their visit. For further tour information call (800) 953-5592. And, of course, no one leaves without a free gift of Jelly Belly jelly beans at the end of the tour. If you can, go on weekdays, tours are more fun because machines are moving. Tours run every 15 minutes, and go from 9-5 all week. No reservations are required.

www.jellybelly.com

In addition to seeing a real, working candy factory, guests will find an exhibition candy kitchen where sweet treats are made daily. See the website for more tour information, directions, and a map. There is also a Virtual Factory Tour on their website. Fans of Jelly Belly jellybeans have been flocking to the factory since it opened to the public in 1986. And now, their tours are bigger than ever with an expanded Jelly Belly Visitor Center. Retail store open Mon.-Sun. 9 am to 5 pm The Jelly Belly Cafe features Jelly Belly-shaped pizzas and hamburgers, and ice cream in your favorite Jelly Belly flavors. Visitors can also order gourmet coffee drinks at the Java Bar. You can even bring your own lunch and dine al fresco in their picnic area, if you prefer sunshine to neon lights.

SACRAMENTO

GOLD RUSH DISTRICT STATE PARKS INFORMATION LINE (916) 324-0539

CALIFORNIA STATE RAILROAD MUSEUM

One of kids' favorite places to visit. This museum houses 21 restored locomotives and train cars. More than 40 interpretive exhibits, dioramas, pictures, murals, and film presentations document the history of American railroading between 1860 and 1960. Open daily 10-5; closed Jan. 1, Thanksgiving, and Christmas.

Admission \$4, 16 and under, free.

(916) 445-6645 (recorded info) or (916) 323-9280 (museum front desk).

www.californiastaterailroadmuseum.org

STATE CAPITOL

The capitol was built 1860-74 and is noted for its lofty glass dome, which rises 210 feet above the street. The main building contains historical and art exhibits, murals, and statuary. FREE guided tours cover the restored main building and chambers. The capitol building is actually one big museum that you can enter for free and is self-guided. Docent-led tours daily 9-3, leave on the hour with extra ones at 12 noon and 12:30 pm. Tours last about an hour. Closed Jan 1, Thanksgiving and Christmas. Call toll free (866) 240-4655 for more information and location and to book. Booking starts Sept. 15. See the website for more detailed information. Also, can meet your legislator if you call and find out when he/she will be there.

www.cal-parks.ca.gov

SUTTER'S FORT STATE HISTORIC PARK

This was the first European outpost in the California interior. The restored 1839 adobe fort has relics of pioneer and gold rush days. Open daily, 10-5. Closed Jan 1, Thanksgiving, and Christmas. Admission mid-May to mid-Sept and during events \$6; ages 6-12, \$3. Admission rest of year \$3; 16 and under, free. Rates change throughout the year so call ahead. Self-guided tour lasts 45 min-1 hour.

Call (916) 445-4422 or (916) 324-0539 (recording) for more information.

www.cal-parks.ca.gov

COLUMBIA

COLUMBIA STATE HISTORIC PARK

12 square blocks in the old business district have been partially restored to its appearance in the Gold Rush days. Stagecoach rides, horseback tours, gold panning, and gold mine tours are available. Park is open daily, stores 10-5, horseback rides 8-6. Park admission is free. Fees for tours, stagecoach rides, and gold panning. Call (209) 532-0150 for more information. (A private campground nearby (209) 532-9539.)

OAKDALE

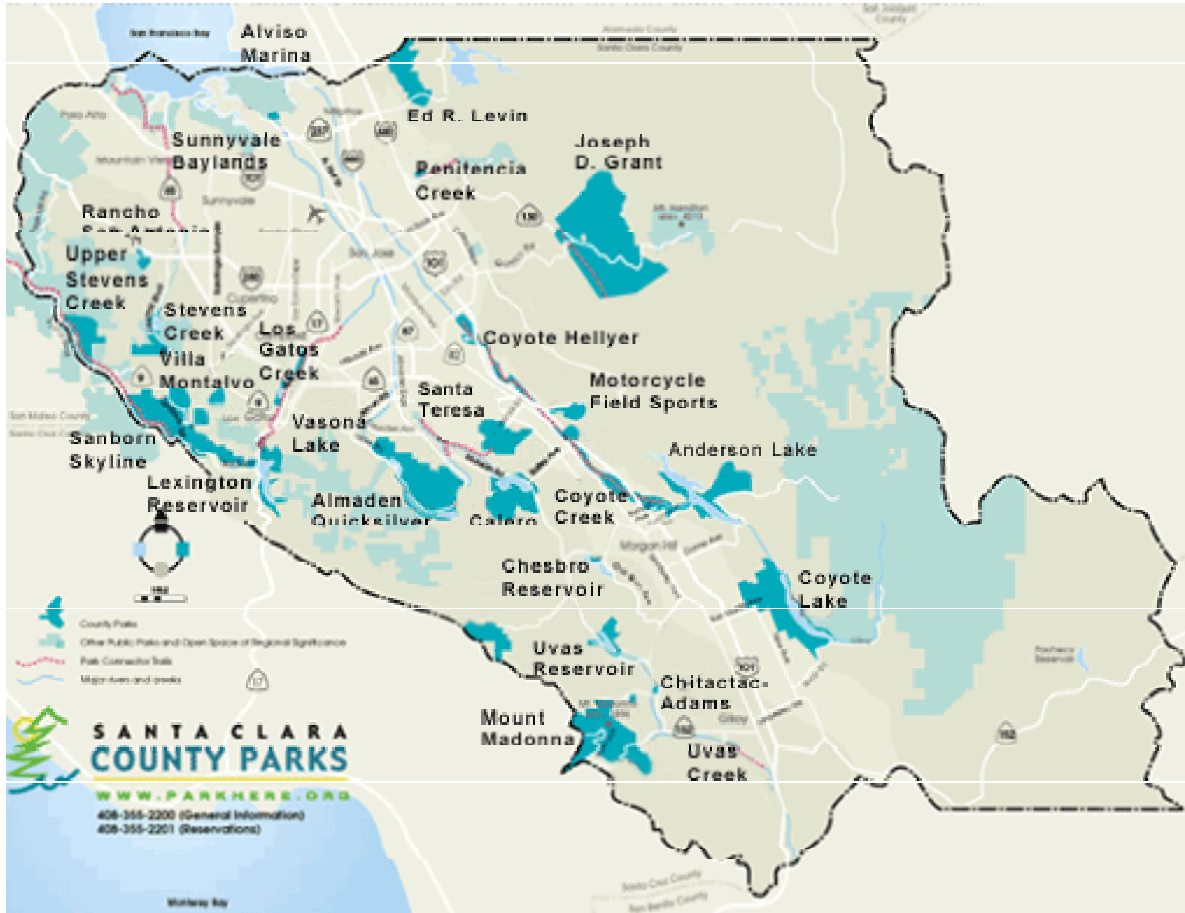
HERSHEY CHOCOLATE FACTORY

**TOURS SUSPENDED, BUT THEY ARE STILL DOING SOME FOR SCHOOLS,
ETC. SO CALL**

The factory is located at 1400 S. Yosemite Ave. Visitor center is at S. Sierra Ave and G St. Shuttle bus from the visitor's center to the factory. Free 30-minute tours are given Mon-Fri, 8:30-3. Visitor center and gift shop open Mon-Wed, 9-5; Thurs, 9-7; Fri-Sat, 9-5. Closed Good Friday, and holidays. (209) 848-8126. If 15 or more people call ahead.

SANTA CLARA COUNTY PARKS (part 1 of 2)

Santa Clara County Parks website: <http://www.parkhere.org>



How to Make a Site Reservation:

1. Online Reservations:

Boating, camping or group picnic sites can be reserved on-line by visiting www.goutsideandplay.org.

2. Phone Reservations:

Call the reservations office, Monday through Friday, 8:30 a.m. to 3:30 p.m. except holidays. Phone: (408) 355-2201 Fax: (408) 355-2290 (Requests for information only)

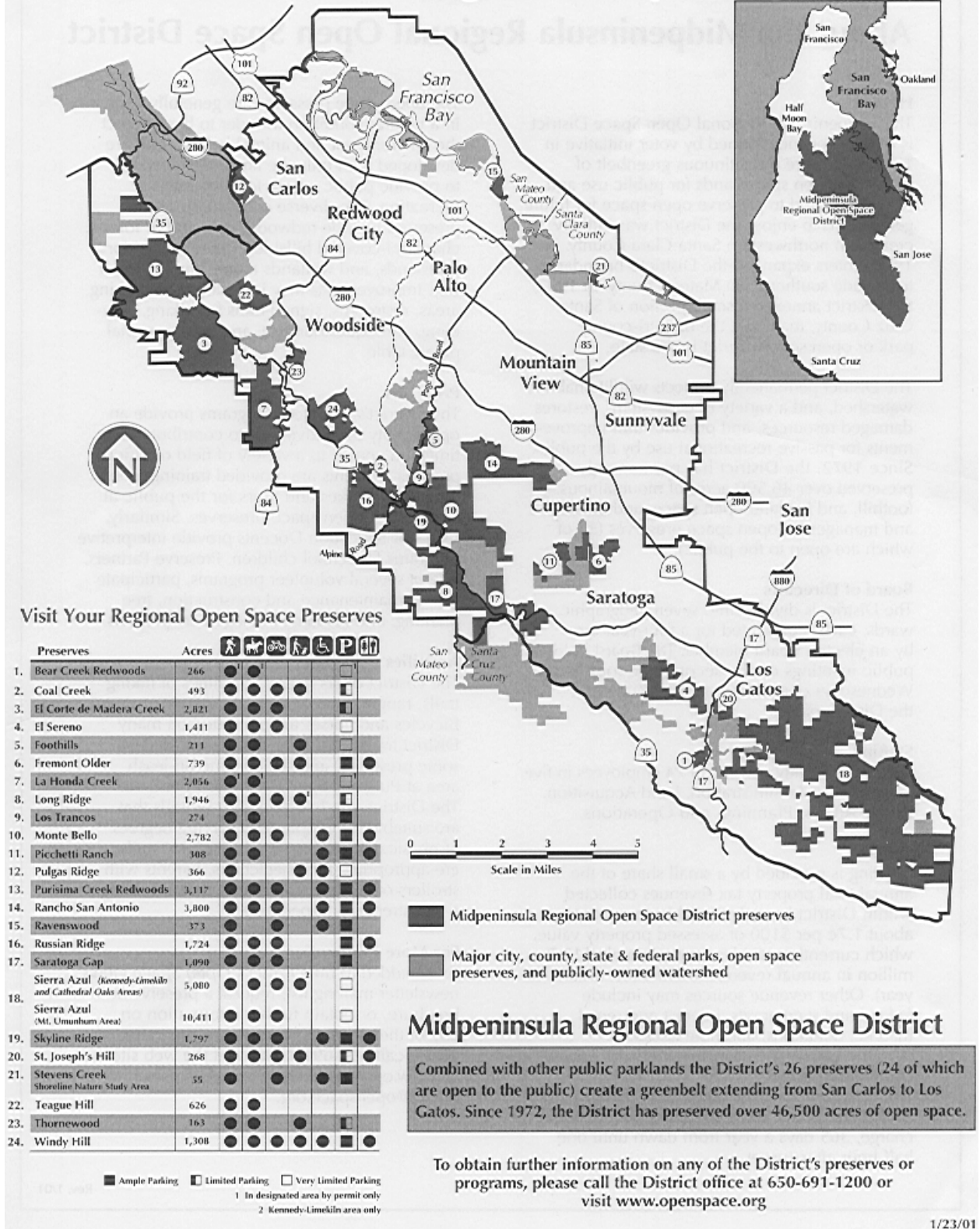
3. Walk-in Reservations:

Stop by the reservations office located in the Parks Administration building in Vasona Lake County Park in Los Gatos, Monday thru Friday, 9:00 a.m. to 4:00 p.m. except holidays.

SANTA CLARA COUNTY PARKS (part 2 of 2)

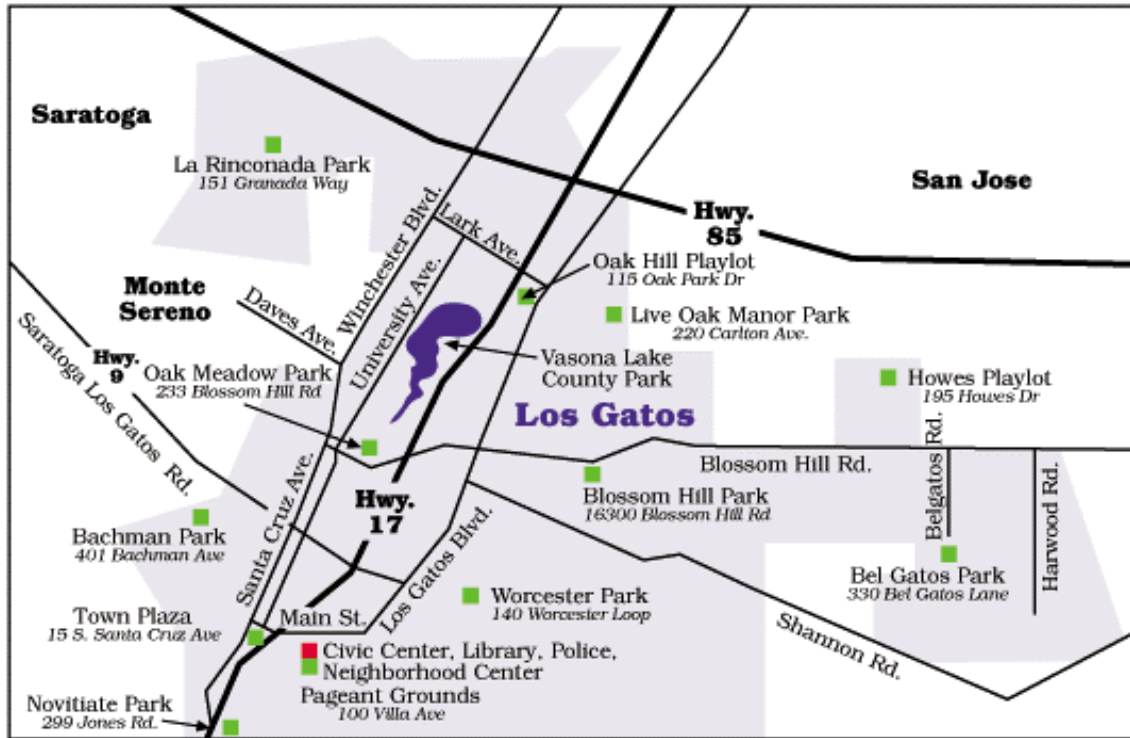


Welcome to Regional Open Space



Local Parks in Los Gatos

<http://www.losgatosca.gov/services/6b.html>



Non-residents of Los Gatos are charged \$4.00 per day/per vehicle to park in Oak Meadow Park. Parking at Oak Meadow Park is free for residents of Los Gatos & Monte Sereno, seniors and handicapped. There is refundable park site cleaning security deposit request of \$100 with reservations for a site. Call Parks & Public Works at 399-5781 for details regarding Pageant Grounds & Bandstand/Gazebo reservations. Permits and fees are required for weddings, vehicle access to sites, jump houses & special events.

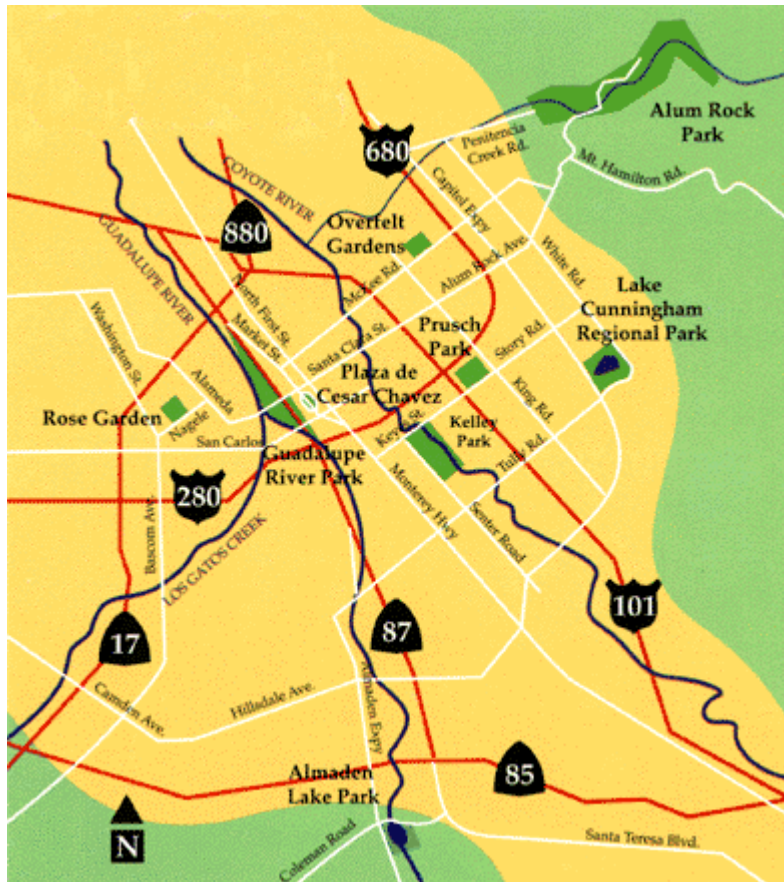
Bachman Park	Bachman Avenue & Belmont Street
Belgatos Park	End of Belgatos Road
Blossom Hill Park	Blossom Hill Road
Fairview Plaza	End of Fairview Plaza
Howes Playlot	Off Union Ave, between Howes Ave & Thomas Dr
La Rinconada Park	Wedgewood Drive & Granada Way
Live Oak Manor Park	Corner of Carlton Avenue & Gateway Drive
Los Gatos Creek Trail	Running through Los Gatos
Novitiate Park	End of Jones Road, off College Avenue
Oak Hill Playlot	Garden Lane & Oak Park Drive
Oak Meadow Park	University Avenue & Blossom Hill Road
Pageant Grounds	Behind Los Gatos Civic Center
Town Plaza Park	W. Main St, Montebello Way, & S. Santa Cruz Ave
<u>Vasona County Park</u>	Blossom Hill Road
Worcester Park	Worcester Loop

San Jose Regional Parks

www.ci.san-jose.ca.us/prns/regionalparks

- Almaden Lake
- Alum Rock Park
- Edenvale Garden Park
- Emma Prusch Farm
- Guadalupe River
- Kelley Park
- Lake Cunningham
- Overfelt Gardens
- Rose Garden

To visit a park, click on the map:



San Jose Neighborhood Parks

San Jose has 144 neighborhood parks. Visit the S.J. Neighborhood Parks website, www.sjpark.org, for the index on all the parks, plus information on special uses, reservations, and other community services.

